

**JRL**®  
PROFESSIONAL



JRL PROFESSIONAL was born from one founder's relentless pursuit of perfection in hair styling tools.

As a stylist with years of hands-on experience in the hair industry, he knew exactly what barbers and stylists needed: precision, quality, and durability.

His commitment to these high standards led him to create the ultimate professional tools that met his strict criteria for excellence.

With over 30 years of experience developing high-quality hair styling tools for well-known global brands, he took his expertise to the next level by establishing a manufacturing facility in Asia.

As his passion for innovation grew, he teamed up with his partner in the USA, who brought global cultural understanding and American insight.

Together, they envisioned a brand that would revolutionize the industry.



# PATENTED TECHNOLOGY

## Magnetic Levitation Technology

Suspends Blades Without Physical Support, Achieving A Smooth And Even Shave



## RESET IQ Charge Technology

Patented RESET IQ Charge Technology Expands Battery Life



Original Lithium Battery Life Varies After Extended Use



A New Battery Powers To 100%

After Extended Use, Battery Charges Up To Only 80%



New Design Consistently Charges To 100% Even With Extended Use

## Patented Smart Clip Technology

Constant Speed Motor Won't Drag or Stall



## Patented Cool Blade Technology

Stays Ultra Cool & Sharp After Extended Use



## Advanced Lever Locking Technology

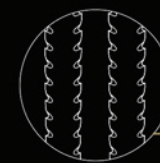
5 Steady Level Locking Adjustments With Infinite Variable Control That Maintains Over Long Term Use.



## New Comb Design

Comfortable Anti-Skid Handle Grip

Patented Fine Tooth Flute Design Helps Lift The Hair





CLIPPERS  
& TRIMMERS  
& SHAVERS





Patented Reset IQ Charge Technology  
Expands battery life



Innovative Upper-Lower Separation  
For quick, hassle-free blade maintenance and replacement



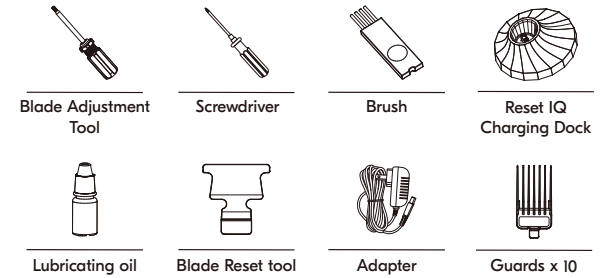
Brushless Motor  
Delivers ultra-strong torque and lasting durability with 8200 RPM



Run Time  
Up to 4 Hours



## Kit Contents :



### DI2025-C

#### Specifications

Voltage	100-240V, 50/60Hz	Size	7.6"
Charging Time	2.5 Hours For Fast Charging 5 Hours For Reset IQ Charge	Weight	280g
Usage Time	UPTO 4 Hours	Package Dimensions	6.02" x 5.82" x 8.3"
Motor Type	Brushless	Standard Pack Dimensions	19.48" x 12.55" x 18.11"
Speed (Revolutions Per Minute)	8200 RPM	Shipping Weight	NA
Battery Capacity	3.6V 3400mAh	Units Per Carton	12
Combs	1.5mm/3mm/4.5mm/6mm/10mm/13mm	Standard Pack Quantity:	1

## FEATURES CLIPPER

### BRUSHLESS MOTOR

DELIVERS ULTRA-STRONG TORQUE AND LASTING DURABILITY WITH 8200 RPM

### PATENTED RESET IQ CHARGE TECHNOLOGY

EXPANDS BATTERY LIFE

### INNOVATIVE UPPER-LOWER SEPARATION

FOR QUICK, HASSLE-FREE BLADE MAINTENANCE AND REPLACEMENT

### PRECISION FADE BLADE WITH PATENTED GOLD BLADE

TECH STAYS ULTRA-COOL AND SHARP EVEN AFTER EXTENDED USE

### PATENTED SMART-CLIP TECHNOLOGY

FEATURES CONSTANT SPEED MOTOR, WON'T DRAG OR STALL

### LED DISPLAY

INDICATES REMAINING BATTERY TIME

### RUN TIME

UP TO 4 HOURS





2nd-Gen EZ-Gap  
For hassle-free up/down  
blade adjustment



Patented Smart-Clip Technology  
Constant speed motor won't drag  
or stall



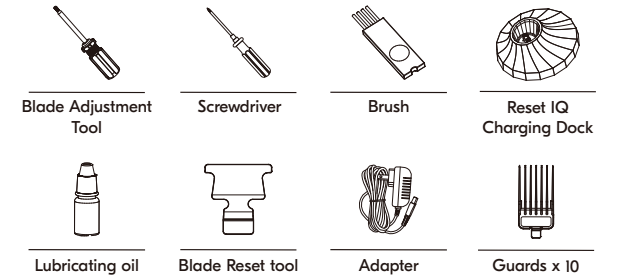
Patented Reset IQ Charge  
Technology  
Expands battery life



Ultra-Low Noise



## Kit Contents :



### DI2025-T

#### Specifications

Voltage	100-240V, 50/60Hz	Size	7.0"
Charging Time	2 Hours For Fast Charging 3 Hours For Reset IQ Charge	Weight	230g
Usage Time	UPTO 2 Hours	Package Dimensions	5.47" x 5.27" x 8.7"
Motor Type	Brushless	Standard Pack Dimensions	19.48" x 12.55" x 18.11"
Speed (Revolutions Per Minute)	8200 RPM	Shipping Weight	NA
Battery Capacity	3.7V 2000mAh	Units Per Carton	12
Combs	1.5mm/3mm/6mm/8mm/10mm	Standard Pack Quantity:	1

## FEATURES TRIMMER

### BRUSHLESS MOTOR

DELIVERS ULTRA-STRONG TORQUE AND LASTING DURABILITY WITH 8200 RPM

### 2ND-GEN EZ-GAP

FOR HASSLE-FREE UP/DOWN BLADE ADJUSTMENT

### PATENTED SMART-CLIP TECHNOLOGY

CONSTANT SPEED MOTOR WON'T DRAG OR STALL

### PATENTED RESET IQ CHARGE TECHNOLOGY

EXPANDS BATTERY LIFE

### ULTRA-LOW NOISE

### BATTERY RUNTIME:

UP TO 2 HOURS

### USE CASE:

LINEUPS, BEARD SHAPING, DETAILING, NECKLINES, FINISHING WORK





2020C-B



Patented RESET IQ Charge Technology Expands Battery Life



Patented Smart-Clip Technology Ft. Constant Speed Motor Won't Drag or Stall



Equipped With ONYX Fade Precision Blade, Helps Get the Fresh Fade Look



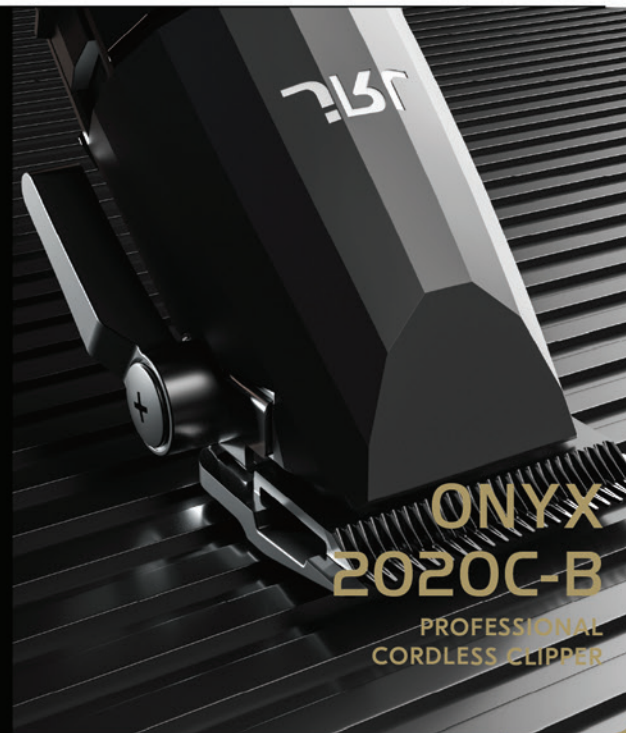
5 Hours Run Time



Logo Back-Lit With LED Light & Power Level Indication



5 Steady Level Locking Adjustments With Infinite Variable Control That Maintains Over Long Term Use



ONYX  
2020C-B  
PROFESSIONAL  
CORDLESS CLIPPER



2020C-B-W



2 Adjustable Speeds (6000 & 7500 RPM)



Long-Lasting Motor Life Up To 1000 Hours

### Kit Contents



Screwdriver



Brush



Lubricant



Comb x10



Adapter



RESET IQ Charging Dock



Blade Adjustment Tool & Protector

### Specifications

Voltage	100-240V, 50/60Hz	Size	7.6"
Charging Time	2.5 Hours for Fast Charging 5 Hours for RESET IQ Charging	Weight	375g
Usage Time	5 Hours	Package Dimensions	6.02" x 5.82" x 8.3"
Motor Type	Rotary	Standard Pack Dimensions	19.48" x 12.55" x 18.11"
Motor Life	More Than 1000 Hours	Standard Pack Quantity:	1
Speed(Revolutions Per Minute)	6000 / 7500	Shipping Weight	15.0kg
Battery Capacity	3.6V 3500 mAh	Units Per Carton	12
Combs	1.5mm, 3mm, 4.5mm, 6mm, 10mm, 13mm, 16mm, 19mm, 22mm, 25mm		

## FEATURES & BENEFITS

- **Patented RESET IQ Charge Technology**  
A new way of charging that extends battery life, consistently charging to 100% even after extended use  
2.5 Hours for regular charging, 5 hours for RESET IQ charging
- **Patented Smart-Clip Technology**  
Clipper senses blade resistance and revs up the motor speed, so clipper never drags or stalls, giving you a smooth, even cut every time
- **Patented Cool Blade Technology**  
Special material keeps blade cool to the touch  
Blade remains cooler than most clippers in a 30-minute test  
Blade is also interchangeable with most professional clipper brands
- **Constant Power**  
2 Adjustment speeds for cutting versatility  
6,000 & 7,500 RPM and maintains speeds during run time
- **Equipped With ONXY Fade Precision Blade**  
Helps get the fresh fade look
- **Advanced Lever Locking Feature**  
5 Steady level locking adjustments with infinite variable control that maintains over long term use
- **Long-Lasting Motor Life Up To 1000 Hours**
- **LED Display Indicates Remaining Battery Time**



ONXY  
2020C-B

PROFESSIONAL CORDLESS CLIPPER



**2020T-B**



Patented ONYX EZ-GAP Blade  
Ensures Clean, Flawless  
Zero Gaps Every Time



Patented Smart-Clip  
Technology Ft.  
Constant Speed  
Motor Won't Drag or Stall



Long-Lasting Motor Life  
Up To 1000 Hours



Max 3.5 Hours Run Time



Low Noise



8200 Revolutions  
Per Minute



# ONYX 2020T-B









PROFESSIONAL  
CORDLESS TRIMMER



**2020T-B-W**

## Kit Contents



-   
Blade Adjustment  
Tool
-   
Screwdriver
-   
Brush
-   
Lubricant
-   
Blade Protector
-   
Adapter
-   
Charging Dock
-   
Comb x5

## Specifications

Voltage	100-240V, 50/60Hz	Size	7.0"
Charging Time	1.5 Hours	Weight	305g
Usage Time	3.5 Hours	Package Dimensions	5.47" x 5.27" x 8.7"
Motor Type	Rotary	Standard Pack Dimensions	19.48" x 12.55" x 18.11"
Motor Life	More Than 1000 Hours	Standard Pack Quantity:	1
Speed (Revolutions Per Minute)	8200	Shipping Weight	12.1
Battery Capacity	3.6V 2000mAh	Units Per Carton	12
Combs	1.5mm/3mm/6mm/8mm/10mm		

## FEATURES & BENEFITS

- **Patented ONYX EZ-GAP Blade Ensures Clean, Flawless Zero Gaps Every Time**  
Ideal for lining, designing and dry shaving, allowing barbers to cut trouble free
- **Patented Smart-Clip Technology**  
Trimmer senses blade resistance and revs up the motor speed, so the trimmer will not drag or stall
- **Max 3.5 Hours Run Time**
- **Power With 8200 Revolutions Per Minute**
- **Long-Lasting Motor Life Up To 1000 Hours**
- **Logo Back-Lit With LED Light And Power Level Indication**



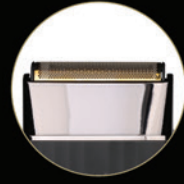
PROFESSIONAL CORDLESS TRIMMER



SH2301



Ultra-Thin and Skin-Friendly Foil for Super Close Cut Performance without Applying Pressure



Durable, Buildup-Free Foil Ensures Shaver Efficiency and Cleaner Grooming Experience



2 Hours Charging Time = 3 Hours Run Time LED Light Shows Battery Status



Low Noise



Use Cordless or with Cord



High-Power Motor with 8000 RPM



SH2301-W

### Kit Contents



Brush



Lubricating Oil



Adapter

### Specifications

Voltage	100-240V, 50/60Hz	Size	4.6"
Charging Time	2 Hours	Weight	190g
Usage Time	3 Hours	Package Dimensions	5.43" x 3.5" x 7.5"
Motor Type	Rotary	Standard Pack Dimensions	15.74" x 11.41" x 11.22"
Motor Life	More Than 1000 Hours	Standard Pack Quantity:	1
Speed (Revolutions Per Minute)	8000	Shipping Weight	7kg
Battery Capacity	3.7V 1400 mAh	Units Per Carton	12

## FEATURES & BENEFITS

- Ultra-Thin And Skin-friendly Foil For Super-Close Cut Performance Without Applying Pressure
- Super Durable And Long-Lasting Foil
- High-Power Motor With 8000 RPM
- 2 Hours Charging Time For 3 Hours Of Use LED
- Low Noise Due To Magnetic Levitation Blade System
- Use Cordless Or With Cord
- LED Light Indicates Battery Status



SINGLE FOIL SHAVER



2020C



2020C-G



High Grade Stainless Steel Stationary Blade & Titanium Moving Blade  
Ideal For Dry & Wet Shaving



Back-Lit Logo with LED Light & Power Level Indicator



2 Adjustable Speeds:  
6000 & 7200  
Revolutions Per Minute



Advanced Lever Locking Feature Maintains Lever Secure for Extended Use



LED Display Indicates Remaining Battery Time



4 Hours Run Time



**FRESHFADE**  
**2020C**  
PROFESSIONAL  
CORDLESS CLIPPER



Adjustable Standard Blade BF03

### Kit Contents



Screwdriver



Brush



Lubricant



Comb x10



Adapter



Blade Adjustment Tool & Protector

### Specifications

Voltage	100-240V, 50/60Hz	Size	6.7"
Charging Time	3 Hours	Weight	340g
Usage Time	4 Hours	Package Dimensions	5.37" x 5.35" x 7.48"
Motor Type	Rotary	Standard Pack Dimensions	17.79" x 11.33" x 17.04"
Motor Life	More Than 500 Hours	Standard Pack Quantity:	1
Speed (Revolutions Per Minute)	6000 / 7200	Shipping Weight	13kg
Battery Capacity	3.6V 3200 mAh	Units Per Carton	12
Combs	1.5mm, 3mm, 4.5mm, 6mm, 10mm, 13mm, 16mm, 19mm, 22mm, 25mm		

## FEATURES & BENEFITS

- **Revolutionary Cool Blade**  
Special material keeps blade cool to the touch, making blade 7°C/13.89°F cooler than most clippers in a 30-minute test  
Blade is also interchangeable with most professional clipper brands
- **Advanced Lever Locking Technology**  
Support spring insures 5 steady level locking adjustments with infinite variable control that maintains over long term use
- **Long-Lasting Lithium Ion Battery**  
3 hours charge produces 4 hours battery life
- **Longer Cutting Range**  
Our blade opens more, from 0.5-3.5mm (can also be zero gapped) , offering extra cutting length without using a comb attachment
- **Patented Smart-Clip Technology**  
Clipper senses blade resistance and revs up the motor speed, therefore clipper will never drag or stall
- **Constant Power**  
Equipped with 2 adjustable speeds (6000 & 7200 RPM) and maintains speeds during 4 hours run time
- **LED Display Indicates Remaining Battery Time**



# FRESHFADE

# 2020C

PROFESSIONAL CORDLESS CLIPPER



2020T



2020T-G



Stainless Steel T-Blade  
Ideal for Lining Designing,  
and Dry & Wet Shaving



Back-Lit Logo with  
LED Light & Power  
Level Indication



2 Hours Usage Time



Max Speed 7200  
Revolutions Per Minute



**FRESHFADE**  
**2020T**  
PROFESSIONAL  
CORDLESS TRIMMER

### Kit Contents



Blade Adjustment  
Tool



Screwdriver



Brush



Blade Adjustment  
Tool & Protector



Lubricant



Adapter

### Specifications

Voltage	100-240V, 50/60Hz	Size	6"
Charging Time	2 Hours	Weight	212g
Usage Time	2 Hours	Package Dimensions	5.37" x 5.35" x 7.48"
Motor Type	Rotary	Standard Pack Dimensions	17.79" x 11.33" x 17.04"
Motor Life	More Than 500 Hours	Standard Pack Quantity:	1
Speed (Revolutions Per Minute)	7200	Shipping Weight	10.5kg
Battery Capacity	3.7V 1400 mAh	Units Per Carton	12

## FEATURES & BENEFITS

- **360° Exposed Ultra Sharp T-Blade**  
Ideal for lining, designing and dry shaving allowing barbers to cut trouble free
- **Patented Smart-Clip Technology**  
Trimmer senses blade resistance and revs up the motor speed, so the trimmer never drags or stalls
- **2 Hours Battery Life**
- **Max 7200 Revolutions Per Minute**
- **Superior Motor**  
3 times more powerful on torsion than most trimmers on the market



FRESHFADE

2020T

PROFESSIONAL CORDLESS TRIMMER

## GHOST KIT 1



GH2401-1

## GHOST KIT 2



GH2401-2

## GHOST KIT 3

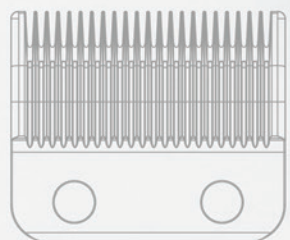


GH2401-3

### FEATURES & BENEFITS

Wide range of accessories: comb guards, cleaning brush, lubricating oil, screwdriver, blade guards & more.

- Designed for professional barbers and stylists as well as home grooming enthusiasts.
- Cordless freedom and long battery runtimes reduce downtime and improve workflow efficiency
- Complete Professional Grooming & Styling System The GHOST Kit 3 combines cutting, shaving, and drying into one premium set, offering a seamless workflow from start to finish.
- Advanced Performance with Smart Technology Built with intelligent motor and charging technologies, kit delivers consistent power, smooth cutting, precise detailing, and fast drying
- Precision Results Designed for sharp fades, clean line-ups, and close finishing, ensures high accuracy while remaining gentle on the skin, making it suitable for professional, all-day use.



# BLADES



# CLIPPER & TRIMMER REPLACEMENTS BLADES

- Can be adjusted from 0-3.5mm
- Self-sharpening, rust-free, stay sharp for every cut
- Design with precision in touch areas

- Can be adjusted from 0-3.5mm
- Self-sharpening, rust-free, stay sharp for every cut
- Design with precision in touch areas

## 2020C STANDARD TAPER BLADE



BF03



BF03-G

## 2020C FADE PRECISION BLADE



BF04



BF04-G

## 2020C-B ONYX FADE PRECISION BLADE



BF04-B



Fits on 2020C and other popular brands on the market

Fits on 2020C-B and 2020C and other popular brands on the market



SF09



## ONYX EZ-GAP M BLADE

- Can be adjusted from 0-3.5mm
- SF09 blade ensures clean, flawless zero gaps every time
- Ideal for use on sharp front and side line ups, beard sculpting and freestyle designs
- Fits on 2020T-B and 2020T and other popular brands on the market



SF08



SF08-G

## EZ-GAP C BLADE

- Can be adjusted from 0 to 3.5mm
- Blade stays ultra cool and sharp after extended use
- Ideal for use on sensitive or soft skin, individuals with enlarged follicles and children
- Fits on 2020T and other popular brands on the market

## SHIVERS REPLACEMENTS BLADES



SB02

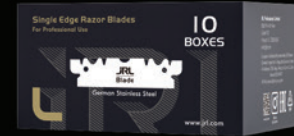


### ONYX SINGLE SHAVER REPLACEMENT FOIL

Ultra-thin and skin-friendly foil for super-close cut performance without applying pressure.

Fits on shaver ONYX SH2301

## MAGNETIC STRAIGHT EDGE RAZOR



### JRL-JDI02

Description: JRL Single Edge Razor Blade

Size (in): 1.7 × 0.4

Package: 100 blades/mini box, 10 mini boxes/master box, 200 mini boxes/ctn

Price May Vary As Per Quantity

## MANUAL CLIPPER



### HM2301

Description: Manual Clipper

Size (in): 6.8 × 4.1

Standard Pack: 12pcs/ctn, 0.037m<sup>3</sup>/ctn

## HAIR TOOL MAINTENANCE PRODUCT



### JRL-LIQ001

Description: Hair Clipper Blade Oil

Size (ml): 20ml

Standard Pack: 48pcs/ctn, 0.021m<sup>3</sup>/ctn



# HAIR DRYERS





2020H

*Ultra-Light &  
Powerful & Efficient*



Ultra Light



Low Noise



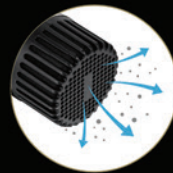
Precise Settings



JRL LED Light Indicates  
Dryer Status



Fast & Powerful with up to  
90000 RPM Motor Speed  
& 2150W Power



Auto-Cleaning Function  
Assists with Deep  
Cleaning of Filter



Negative Ions Hydrate  
Hair while Reducing  
Drying Time, Frizz & Static

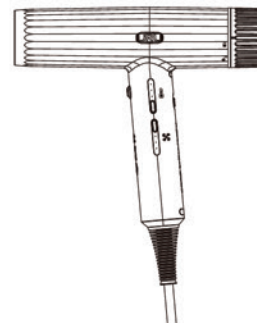


# FORTE PRO 2020H



2020H-W

## Kit Contents



Styling Concentrator



Smoothing Nozzle



Diffuser



Cleaning Brush

## Specifications

Motor Speed	90000 RPM	Wattage	220-240V~ 50/60Hz 1900-2150W 120-125V~ 60Hz 1800-1875W
Temperature Settings	3	Standard Pack Quantity	12
Speed Settings	3	Shipping Weight	18.8kg
Weight	320g	Standard Pack Dimensions	20.0" x 17.7" x 21.6"
Power Cord Length	3.5 meters	Product Dimensions	7.16" x 6.69"

MRP - 21900/-

## FEATURES & BENEFITS

- **Powerful And Fast**  
With motor speed of up to **90,000 RPM** and power of **2,150W**
- **Long & Stable Lifetime**  
With a durable brushless DC motor
- **Auto-Clean Function**  
Assists with deep cleaning of filter
- **Built In Advanced Ion Generator**  
Negative ions hydrate hair while reducing drying time, frizz and static
- **JRL LED Status Indicator Light**  
At-a-glance convenience of dryer status with regular cleaning auto-cleaning warnings
- **Memory Function**  
Memorize the selected speed and the temperature settings.
- **Precise Setting**  
Cool shot button plus 3 temperature and 3 speed settings
- **Ultra Lightweight And Compact**



FORTE PRO

2020H

PROFESSIONAL HAIR DRYER



**SALON  
EQUIPMENT**



# SPEED-HEAT TOWEL WARMER



## JRL-JPD003

**Size (cm):** 25.0 × 24.2 × 24.3  
**Power:** 50Hz 220-240V~ 530W  
**Package:** 4pcs/ctn

## FEATURES & BENEFITS

- Holds up to 12 facial wrap towels per use
- For shaves or beauty treatments
- Contains wooden tweezers
- For salon or portable use
- No pre-soaking of towels
- Towels ready in 10 min

Contains Wooden Tweezers:



# FAST SWEEP HAIR VACUUM



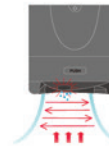
## JRL-JPF004

**Size (cm):** 34.0 × 55.0 × 20.0  
**Power:** 120~240V 1200W  
**Weight:** 5.55kg  
**Capacity:** 6.8 liter

## How FASTSWEEP Works



Sweep up to the front of the FASTSWEEP



Infrared sensors detect debris (hair, dust, dirt, etc.)



Hard floors are cleaned easily:  
 ✓ Wood ✓ Tile  
 ✓ Laminate ✓ Concrete

- Say Goodbye To Back Strain And Pain. JRL's FASTSWEEP Eliminates The Need To Bend Down To Sweep. Its High-Tech Infrared Sensors Detect Debris And Automatically Activate Powerful Vacuum Cleaning Of Any Hard Flooring.
- FASTSWEEP Stationary Vacuum Cleaner Is Perfect For Hair Salons, Barber Shops, Boutiques, Hospitality, Kitchens, And Small Businesses. Just Sweep Up To The Infrared Sensors At The Base And Watch As Hair, Dust And Debris Are automatically Suctioned Into The Bin.
- Quick & Convenient  
Always on and ready for any mess
- Powerful Cleaning  
Tackle dirt, dust, hair, food, debris, and more with ease
- Easy Maintenance  
Bagless canister for fast and easy emptying
- Two Modes Settings  
Mode I: Automatically activated infrared sensors are always on and ready.  
Mode II: Manual mode. Automatic activation stops

# COMBS & BRUSHES



J101 J102 J103 J104 J201 J202 J203 J204 J301 J302 J303 J304 J305 J306 J307 J308



#### OTHER COLOR

● RED ○ WHITE ● PINK ● YELLOW ● LILAC ● GREEN ● LIGHT GREEN

#### J101

JRL Fine Teeth Tail Comb 8.5'  
Size (mm): 25 × 215

#### J102

JRL Pin Tail Comb 8.8'  
Size (mm): 25 × 225

#### J103

JRL Teasing Comb 9.6'  
Size (mm): 25 × 220

#### J104

JRL Fine Teeth Tail Comb 9.8'  
Size (mm): 33 × 252

#### J201

JRL Barbering Comb 7.6'  
Size (mm): 30 × 193

#### J202

JRL Barber Blending Comb 9.6'  
Size (mm): 49 × 245

#### J203

JRL Blending Comb 8.5'  
Size (mm): 32 × 215

#### J204

JRL Barbering Comb 6.5'  
Size (mm): 24 × 165

#### J301

JRL Cutting Comb 7"  
Size (mm): 25 × 180

#### J302

JRL Cutting Comb 7.3"  
Size (mm): 23 × 185

#### J303

JRL Cutting Comb 7.7"  
Size (mm): 40 × 195

#### J304

JRL Fine Cutting Comb 7.4"  
Size (mm): 29 × 188

#### J305

JRL Precise Cutting Comb 8.6'  
Size (mm): 30 × 220

#### J306

JRL Long Round Tooth Cutting Comb 9'  
Size (mm): 31 × 228

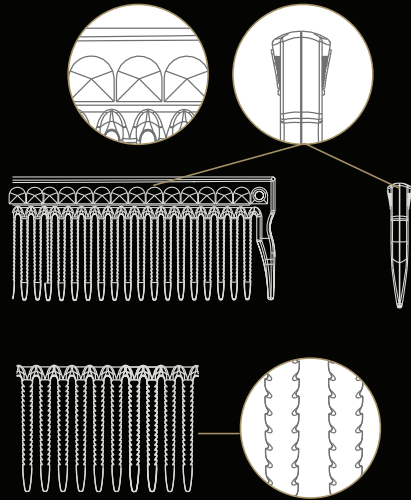
#### J307

JRL Cutting Comb 9.3'  
Size (mm): 30 × 235

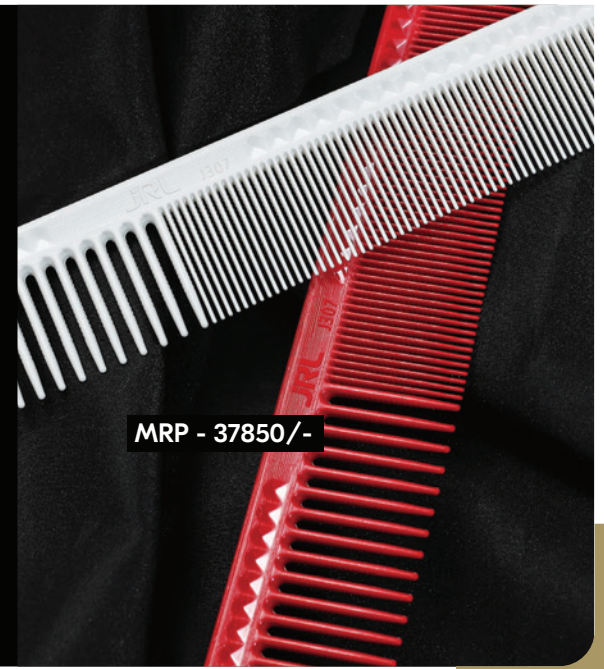
#### J308

JRL Cutting Comb 8.7"  
Size (mm): 42 × 220

## FEATURES & BENEFITS



- Comfortable Anti-Skid Handle Grip Is Designed With Special Patterns And Shape, Providing Stylists Incredible Control Over Every Stroke
- Allows You To Push Flat Against Any Curvature Of The Scalp And Flexes To Suitable Angles For Easy Trimming Around The Ear
- Patented Fine Teeth With Two-sided Flute, Allowing To Hold Hair While Lifting Hair
- Long Term Heat Resistance, Up To 464°F/240°C
- Excellent Chemical Resistance
- Light But Strong
- Speed Up The Drying Process & Create Sleek, Shiny Results

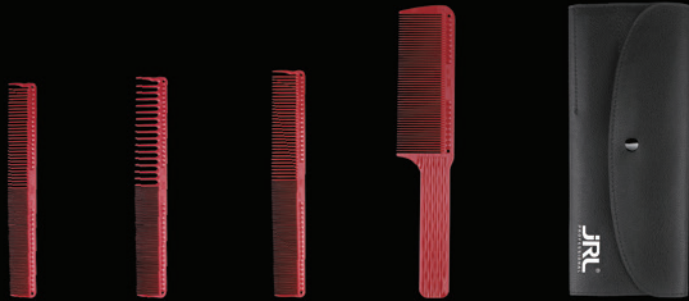


MRP - 37850/-

## OPTIONS

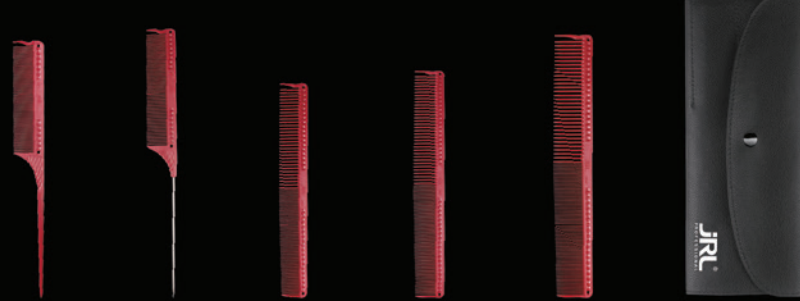


## BARBER COMB SET



J301 Cutting Comb 7"  
 J302 Cutting Comb 7.3"  
 J304 Fine Cutting Comb 7.4"  
 J202 Barber Blending Comb 9.6"  
 Recycled Leather Bag

## STYLING COMB SET



J101 Fine Teeth Tail Comb 8.5"  
 J102 Pin Tail Comb 8.8"  
 J301 Cutting Comb 7"  
 J304 Fine Cutting Comb 7.4"  
 J305 Precise Cutting Comb 8.6"  
 Recycled Leather Bag

### JRL-J001

Size (cm): 28.0 × 26.0 × 26.0  
 Package: 30sets/ctn, 4.5kg/ctn, 0.019m<sup>3</sup>/ctn

### JRL-J002

Size (cm): 28.0 × 26.0 × 26.0  
 Package: 30sets/ctn, 4.5kg/ctn, 0.019m<sup>3</sup>/ctn



JRL-BRI-L

## FEATURES & BENEFITS

- Crafted With Multiplex Ionic Bristles To Ensure Smooth Brushing With Wavy Bristles To Grip The Hair To Maximize Tension For Lift And Shape
- Air Flows Through The Gap Formed Between The Wavy Bristle And The Hair, Helping To Dry And Style The Hair Quickly
- The IGC (Ionic Graphene-Infused Ceramic) Barrel Quickly And Evenly Conducts Heat When Used With Dryer
- With A Revolutionary Heat-activated Feature, The Igc Barrel Changes Color From Black To Gold
- The Rounded Bristle Tips Protect Your Hair And Scalp From Scratching And Damage
- Its Anti-Slip Rubber Design Ensures Easy And Comfortable Use

### JRL-BRI-L-25

JRL Mixed Bristle Brush Extra Long Brush  $\varnothing$ 25mm  
 Size (cm):  $\varnothing$ 2.5 × 30.5  
 Package: 60pcs/ctn, 7.8kg/ctn, 0.062m<sup>3</sup>/ctn

### JRL-BRI-L-32

JRL Mixed Bristle Brush Extra Long Brush  $\varnothing$ 32mm  
 Size (cm):  $\varnothing$ 3.2 × 30.5  
 Package: 60pcs/ctn, 9.6kg/ctn, 0.084m<sup>3</sup>/ctn

### JRL-BRI-L-43

JRL Mixed Bristle Brush Extra Long Brush  $\varnothing$ 43mm  
 Size (cm):  $\varnothing$ 4.3 × 30.5  
 Package: 12pcs/ctn, 11.8kg/ctn, 0.0116m<sup>3</sup>/ctn

### JRL-BRI-L-53

JRL Mixed Bristle Brush Extra Long Brush  $\varnothing$ 53mm  
 Size (cm):  $\varnothing$ 5.3 × 30.5  
 Package: 12pcs/ctn, 14.1kg/ctn, 0.0161m<sup>3</sup>/ctn



- This Brush Is Perfect For All Hair And Beard Types
- It Features 100% Premium Boar Bristles On One Side And Gentle Synthetic Bristles On The Other
- The Soft Synthetic Bristles Are Ideal For Sensitive Scalps, Helping To Prevent Hair Breakage And Reduce Frizz For Your Desired Wave Style
- Premium Boar Bristles Evenly Distribute Scalp Oils For A Natural Shine And Enhanced Wave Formation

### JRL-BR2

JRL Premium Double-Sided Hair & Beard Brush

**Size (cm):** 4.9 × 20.5 × 3.3

**Package:** 60pcs/ctn, 0.043m<sup>3</sup>/ctn



## FEATURES & BENEFITS

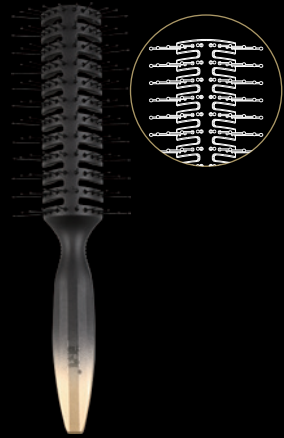
- Say Goodbye To Static And Frizz: Our Brush Is Specially Designed To Combat Static And Frizz, Thanks To Its Materials That Divert Electricity Away From Your Hair, Leaving It Smooth And Flyaway-Free
- Large Size For Effortless Styling : The Generously Sized Brush Head Allows You To Breeze Through Even The Thickest, Textured, Or Wavy Hair, While Still Achieving That Sleek, Glossy Finish
- Innovative And Gentle: With Sculpted Ball Tips And Snag-free Bristles, Our Brush Is A True Game-Changer For Both Wet And Dry Hair Styling. Experience less Damage And Pain-free Styling, All While Maintaining Full Control With The Non-slip Carbon Fiber & Nylon Handle Grip
- Speed Up Drying And Reduce Breakage: Our Brush Features A Quick-drying Vented Pattern On The Cushion That Maximizes Your Hairdryer's Airflow, Cutting Down On Drying Time. Plus, It Prevents The Pulling And Tugging That Can Lead To Hair Breakage
- Built To Last: Crafted From High-quality, Chemical-resistant, And Heat-resistant Carbon Fiber & Nylon, Our Brush Is The Perfect Choice For Those Who Rely On High-temperature Styling And Drying

### JRL-BR3

JRL Anti-static Paddle Brush

**Size (cm):** 24.5 × 8.3 × 3.8

**Package:** 60pcs/ctn, 11.7kg/ctn, 0.074m<sup>3</sup>/ctn



### JRL-BR05

Vented 10-Row Styling Brush

Size (cm): 6.0 × 22.2

Package: 12pcs/box, 60pcs/ctn

## FEATURES & BENEFITS

- **Anti-Static Technology:** Reduces static electricity from brushing friction, leaving hair effortlessly smooth, sleek, and frizz-free
- **Vented Design:** Promotes optimal airflow during blow-drying, speeding up drying time and making styling effortless
- **Versatile Performance:** Ideal for all hair lengths and textures, making it your go-to tool for everyday styling needs
- **Scalp Care:** Ball-tipped bristles gently massage the scalp, stimulating circulation and supporting healthy hair growth



### JRL-BR04-15

JRL Barber Round Brush

Size (cm):  $\varnothing$ 1.5 × 22.0

Package: 12pcs/box, 60pcs/ctn



### JRL-BR04-20

JRL Barber Round Brush

Size (cm):  $\varnothing$ 2.0 × 22.0

Package: 12pcs/box, 60pcs/ctn



### JRL-BR04-25

JRL Barber Round Brush

Size (cm):  $\varnothing$ 2.5 × 22.0

Package: 12pcs/box, 60pcs/ctn

## FEATURES & BENEFITS

- **Shape and Volume Creation:** Perfect for adding shape, volume, and direction to any hairstyle
- **Anti-Static Technology:** Reduces static electricity caused by brushing friction, leaving hair smooth, sleek, and frizz-free
- **Scalp Care:** Ball-tipped bristles gently massage the scalp, stimulating circulation and supporting healthy hair growth



# Accessories



# STATIONERY MAGNET MAT



**JRL-A11**

JRL Stationary Mat, 6 Magnets

**Size (cm):** 49.0 x 32.0 x 0.8

**Package:** 15pcs/ctn, 21.0kg/ctn, 0.024m<sup>3</sup>/ctn

**MRP - 7050/-**



**JRL-A12**

JRL Stationary Mat, 3 Magnets

**Size (cm):** 41.9 x 32.0 x 0.8

**Package:** 20pcs/ctn, 21.0kg/ctn, 0.027m<sup>3</sup>/ctn

**MRP - 4850/-**



## HAIR CLIPS



**JRL-HC01**

JRL Hair Clip

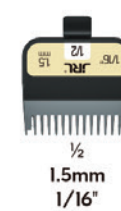
**Size (cm):** 12.2 x 1.4 x 3.5

**Package:** 6pcs/bag, 120bags/ctn, 10.4kg/ctn, 0.07m<sup>3</sup>/ctn



### FEATURES & BENEFITS

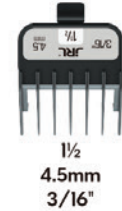
- Stain resistant
- Non-slip grip
- Ideal for home or professional use
- Resists high temperatures and chemicals
- Keep hair in place without indentations



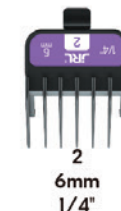
1/2  
1.5mm  
1/16"



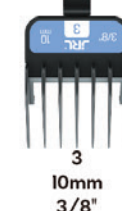
1  
3mm  
1/8"



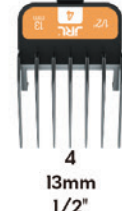
1 1/2  
4.5mm  
3/16"



2  
6mm  
1/4"



3  
10mm  
3/8"



4  
13mm  
1/2"

### GUARD-5

**Description:** Double Magnetic Guards 6 Different Size Attachments For FF 2020C

**Size(in):** 11.4 X 6.1 X 3.35

**Standard Pack:** 6pcs/pack, 24packs/ctn

## TRAVEL BAG



○ BLACK

**JRL-BAI**

JRL Travel Bag

**Size (cm):** 62.0 × 17.0 × 29.0

**Package:** 20pcs/ctn, 18.9kg/ctn, 0.071m<sup>3</sup>/ctn



● WHITE

**JRL-BAI**

JRL Travel Bag

**Size (cm):** 62.0 × 17.0 × 29.0

**Package:** 20pcs/ctn, 18.9kg/ctn, 0.071m<sup>3</sup>/ctn



## SUITCASE



**JRL-A13**

JRL Suitcase 20"

**Size (cm):** 39.0 × 25.5 × 60

**Package:** 1pc/ctn, 4.7kg/ctn, 0.059m<sup>3</sup>/ctn



**JRL-A18**

JRL Suitcase 28"

**Size (cm):** 54.0 × 32.0 × 80.0

**Package:** 1pc/ctn, 6.5kg/ctn, 0.014m<sup>3</sup>/ctn



**JRL -PRO**

Utility Backpack

**Size (cm):** 45 × 32 × 12

**Package:** 1pc/ctn, 3.2kg/ ctn, 0.45/ ctn

## NITRILE GLOVES



### JRL-MN2301

JRL Nitrile Gloves

Package: 100 pcs/box, 10boxes/ctn, 0.021m<sup>3</sup>/ctn

Material: Silicone

### FEATURES & BENEFITS

- Excellent Protection Strength and Durability
- Superb Elasticity
- Better Puncture and Chemical Resistance
- Textured Finertips Touchscreen Compatible
- Extractable Design Convenient and Easy To Store
- 4 Size Options( S: 8cm / M: 9.5cm / L: 11cm / XL: ≥11cm )

## MIRROR



### JRL-NB0008

JRL Mirror

Size (cm): 40. x 23.2 x1.5

Package: 12pcs/ctn, 10.5kg/ctn, 0.039m<sup>3</sup>/ctn

Material: hips

## TROLLEY



### JRL-TL0002

JRL Trolley

Size (cm): 41.0 × 32.0 × 87.0

Package: 1pc/ctn, 10.7kg/ctn, 0.110m<sup>3</sup>/ctn

## DISINFECTANT STEAM SPRAYER



### FEATURES & BENEFITS

- Ultra-fine Mist Allows Precise Spray Control, Increases Absorption Of Hair Products, And Reduces Wait Time.
- Efficient Mist Dispersion Ensures Even Distribution, Maximizing Coverage While Using Less Product For Optimal Results.
- A Versatile Tool Which Can Be Used For Applying Scalp And Hair Care Products, Air Purification, Sanitizing And Deodorizing.

### E4015

JRL Disinfectant Steam Sprayer

Voltage: 100-240V~ 50/60Hz

Volume: 270ml

Package: 48pcs/ctn





JRL Professional Limited

8565 W 44th Ave Suite# 112 Hialeah, FL 33018 USA

[www.jrl.com](http://www.jrl.com)



@jrlusa

@jrlprofessional

---

Imported & Marketed By:



SSIZ International Pvt Ltd

3rd Flr, DLH Mangalmurti Bldg, Linking Road, Nr. Arya Samaj Mandir, Potohar Nagar,  
Santacruz West, Mumbai - 400054

customer care no : +18001209959 | [support@ssiz.in](mailto:support@ssiz.in)

The Name JRL and Logo are the registered trademarks of SSIZ International Pvt Ltd.